

BVE 200 TO 1000

DHW Storage tanks



The BVE series tanks are specially designed for direct circuit solar systems, without heat exchanger.

The tank is made of enamelled steel. The connections of the solar collector circuit are located at the front and rear of the tank, separately from the cold water inlet and hot water outlet located on the rear face.

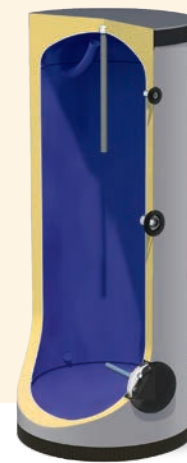
These tanks are to be placed on the ground, and are generally used for solar storage of domestic hot water.



Description

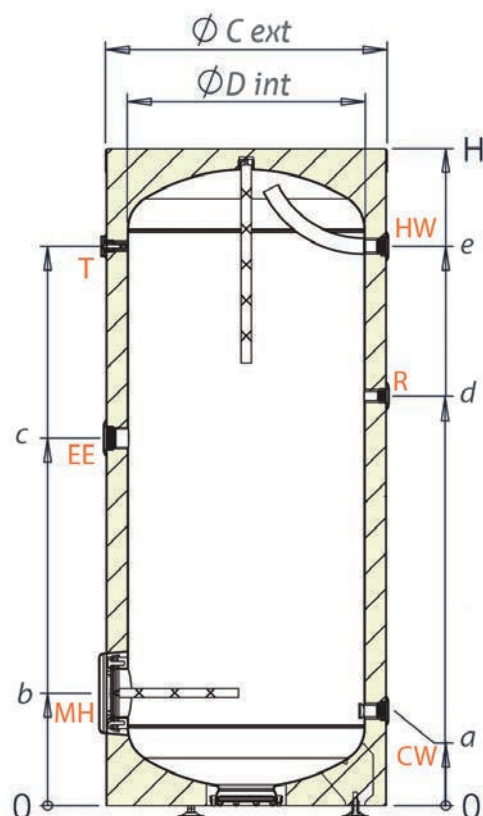
- Sanitary hot water storage tank* in enamelled steel, without heat exchanger
- Tank enamelling inside treatment according to DIN 4753-3 and UNI 10025. Protection by 2 magnesium anodes.
- Rigid PU insulation 50 to 70 mm thick.
- Optional electric backup on 1"½ connection at mid-height.
- External casing classified as standard M3 fire.
- 5 years warranty, electric part 2 years warranty.

* Sanitary water according to French sanitary regulations and in particular with DTU 60.1



BVE 200 to 1000 liters

	Model	200 L	300 L	400 L	500 L	800 L	1000 L
Reference		BVE0200	BVE0300	BVE0400	BVE0500	BVE0800	BVE1000
Total capacity (liters)		199	301	400	469	805	1002
Weight empty (kg)		59	81	96	108	171	200
Rigid PU insulation ejected (mm)		50	50	50	50	70	70
Heat loss ΔT 45K (kWh/24h)		1.5	1.7	2.2	2.5	3.2	3.5
Energy efficiency class		B	B	C	C	C	C
Maximum working-temperature (°C)		95	95	95	95	95	95
Max tank operating pressure (bar)		10	10	10	10	8	8



	Model	
Outlet/Inlet tube	200-500	800-1000
MH Manhole	Ø180	Ø300
CW Cold water inlet	1" F	1 1/2" F
HW Hot water outlet	1" F	1 1/2" F
EE Electric element	1 1/2" F	1 1/2" F
R Recirculation	3/4" F	3/4" F
T Thermometer	1/2" F	1/2" F

Storage tank 5 years warranty

Certifications

Tank enamelling inside treatment according to DIN 4753-3 and UNI 10025
Made in European Union



Model	ØC	ØD	H	a	b	c	d	e
200	600	500	1230	242	287	694	712	982
300	600	500	1760	242	287	1012	1122	1512
400	700	60	1655	238	283	858	1018	1408
500	700	600	1900	238	283	993	1231	1658
800	990	850	1770	331	459	953	1025	1372
1000	990	850	2100	331	459	1154	1262	1727

Dimensions (mm)

SYRIUS SOLAR INDUSTRY
15 rue du Perpignan - ZAC Descartes
34880 Lavérune - France

+33 (0) 4 67 82 00 18
contact@syrius-solar.fr

SAS with capital of € 156 800 - RCS Montpellier 794 797 753 00041

www.syrius-solar.com

