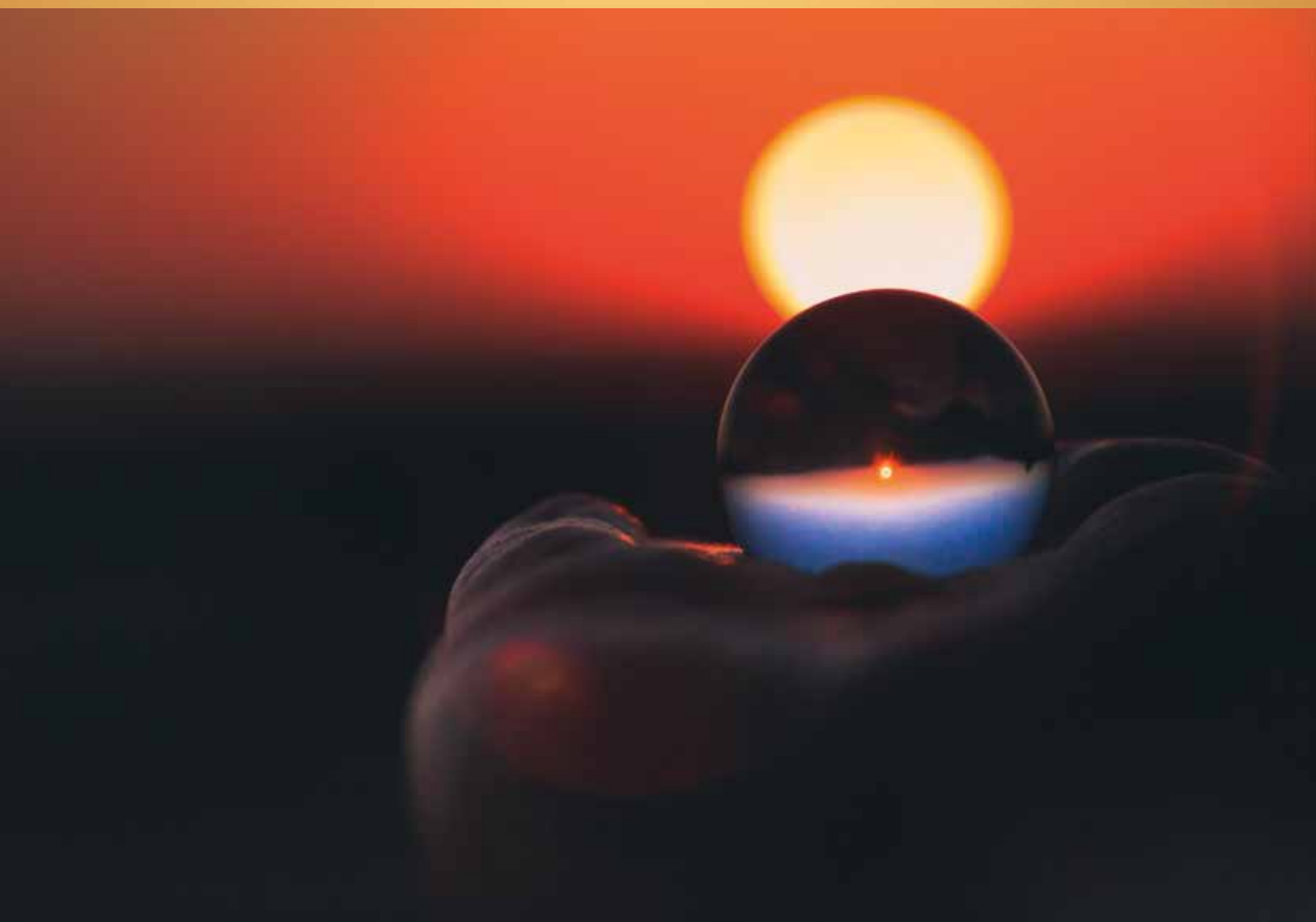


# THERMOSIPHON SOLAR WATER HEATER WITH DOUBLE JACKET

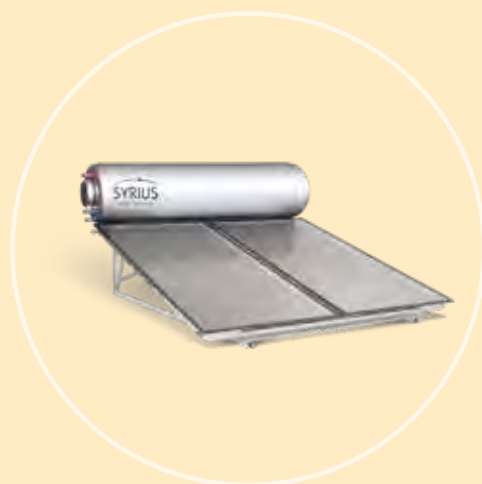
*TS EW*

---



The thermosiphon I.S.W.H. with double jacket works in closed circuit : the antifreeze passes through collectors and the citern. The domestic water is located inside the citern, in a double jacket like a «bain-marie».

This product is recommended for very dirty water or for areas with frost risks.



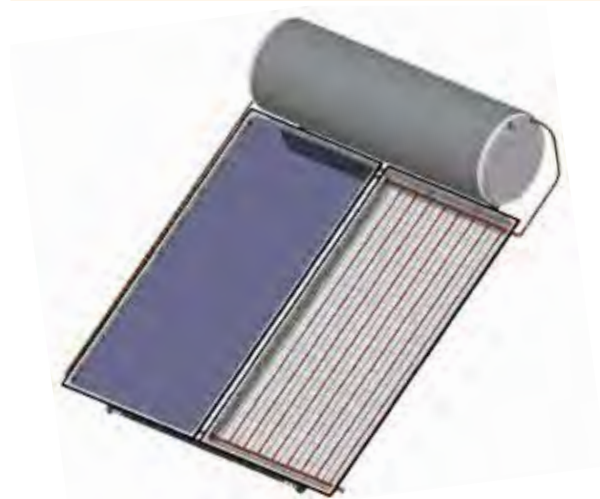
# Set's detail

- Double jacket tank with enamelled steel, stainless steel outlets
- Solar collector(s)
- Tank / collectors connection kits in stainless steel with anti-UV insulation
- Sheet metal roof support made of Magnelis® steel and stainless steel screws  
*(additional terrace support optional)*
- Security group
- Fittings and joints



## TS 202 EW, 304 EW

| Model   | TS 202 EW   | TS 304 EW   |
|---|---|-------------|
| <b>Collector Sirius C2000 D12</b> <i>(cf product sheet for complete technical specifications)</i> |   |             |
| Dimensions (mm)   | 2033 x 1015 x 98  |             |
| Net weight (kg)   | 31  |             |
| Efficiency $\eta_0$   | 62.30 %   |             |
| Heat loss coefficient a1  | 3.272 W/(m <sup>2</sup> .K)   |             |
| Heat loss coefficient a2  | 0.008 W <sup>2</sup> /(m <sup>2</sup> .K <sup>2</sup> )             |             |
| Covering  | Low iron, tempered safety glass 3.2 mm                              |             |
| Absorber type   | Selective aluminum laser welded on Cu tubes                         |             |
| Gross /net area (m <sup>2</sup> )   | 2.05 / 1.81   |             |
| Quantity  | 1   | 2           |
| Total gross area (m <sup>2</sup> )  | 2   | 4           |
| <b>Tank</b>   |   |             |
| Capacity (liters)   | 191   | 293         |
| Dimensions (mm)   | 1415 x 585  | 1920 x 585  |
| Net weight (kg)   | 90  | 117         |
| Tank type   | Steel enamelled coating, double jacket with stainless steel outlets |             |
| Insulation  | PU injected - Thickness minimum 50 mm                               |             |
| Outlets   | 3/4" M - Stainless steel  |             |
| Optional electric backup  | Immersion Heaters   |             |
| <b>Complete System</b>  |   |             |
| Net weight (kg)   | 137   | 198         |
| Overall dimensions (mm)   | 1700 x 2560   | 2300 x 2560 |



**Collectors 10 years warranty**  
**Storage Tank 5 years warranty**  
**Supports 10 years warranty**

## Certifications

SolarKeymark collectors certification



Made in France



**SYRIUS SOLAR INDUSTRY**  
 15 rue du Perpignan - ZAC Descartes  
 34880 Lavérune - France

+33 (0) 4 67 82 00 18  
 contact@syrius-solar.fr

SAS with capital of € 156 800 - RCS Montpellier 794 797 753 00041

[www.syrius-solar.com](http://www.syrius-solar.com)

