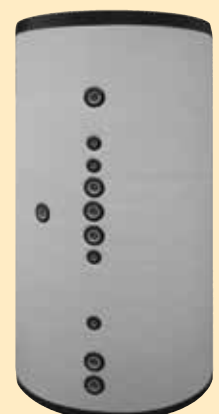


BT-S 580 TO 2000 WITH PRODUCTION OF DHW

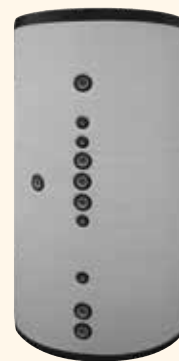


The BT-S series tanks are mainly used for Solar Energy Combined Systems (SECS), combining the production of heating and instantaneous domestic hot water by means of a 316L stainless steel coil.



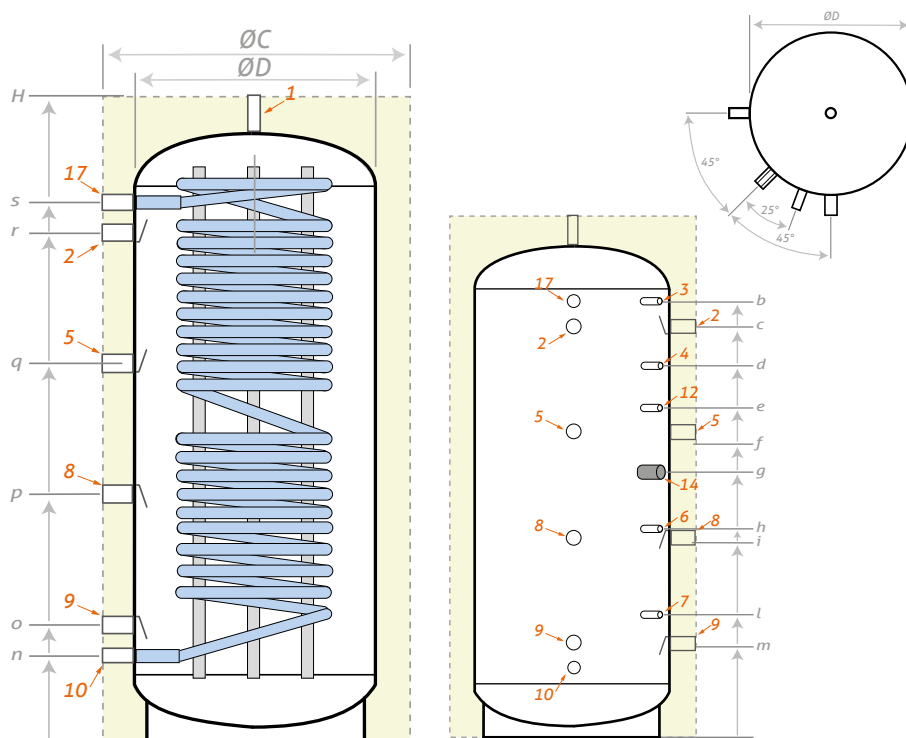
Description

- Buffer tank for SECS, for a heating system and instantaneous DHW, equipped with a stainless steel 316L spiral pipe, without heat exchanger.
- Polyester fiber insulation 100 mm thick.
- External casing classified as standard M1 fire.
- 5 years warranty.



BT-S 580, 800, 1000, 1500 and 2000 liters

	Model	580 L	800 L	1000 L	1500 L	2000 L
Reference		BT0580S	BT0800S	BT1000S	BT1500S	BT2000S
Total capacity (liters)		545	783	870	1470	1908
Weight empty (kg)		170	215	255	310	360
Polyester fiber insulation (mm)				100		
Surface of domestic water pipe coil (m ²)		5.1	6.4	7.6	8.9	8.9
DHW volume (L)		32	40	48	56	56
DHW Production 80°/60° - 10-45°C (kW/m ³ /h)		32 / 0.79	76 / 1.87	77 / 1.89	96 / 2.36	160 / 3.93
Energy efficiency class				C		
Maximum working-temperature (°C)				95		
Max heating operating pressure (bar)				3		
Max working heat exchanger pressure (bar)				10		
Max tank operating pressure (bar)				6		



Outlet/Inlet tube	Model
1	580 to 2000
2	580 to 2000
3, 4, 6, 7, 12	580 to 2000
5	580 to 2000
8	580 to 2000
9	580 to 2000
10	580 to 2000
14	580 to 2000
17	580 to 2000

Buffer tank 5 years warranty

Certifications

Made in European Union



Model	ØC	ØD	H	b	c	d	e	f	g	h	i	l	m	n	o	p	q	r	s
580	850	650	1940	1640	1500	1320	1170	1080	920	800	765	490	345	240	340	740	1140	1540	1640
800	990	790	1930	1580	1485	1290	1190	1075	950	770	725	465	365	280	380	745	1115	1480	1580
1000	990	790	2110	1760	1655	1500	1330	1185	1070	840	785	495	365	280	380	805	1235	1660	1760
1500	1200	1000	2240	1825	1715	1525	1415	1165	1055	870	835	520	445	345	445	870	1300	1725	1825
2000	1300	1100	2380	1950	1830	1640	1470	1260	1150	970	955	630	475	350	450	915	1385	1850	1950

Dimensions (mm)

SYRIUS SOLAR INDUSTRY
15 rue du Perpignan - ZAC Descartes
34880 Lavérune - France

+33 (0) 4 67 82 00 18
contact@syrius-solar.fr

SAS with capital of € 156 800 - RCS Montpellier 794 797 753 00041

www.syrius-solar.com

